

# AT MARMION'S GRAVE

WORDS BY SIR WALTER SCOTT

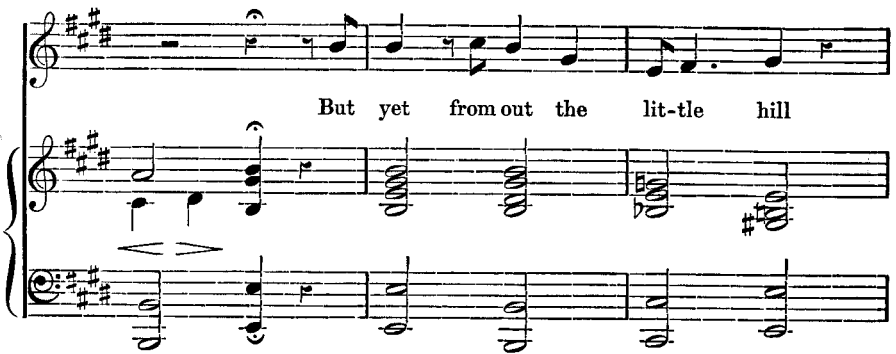
AIR BY JOHN RUSKIN, 1881

*Andantino tranquillo.*



PIANO. *p*

The piano introduction consists of two staves. The right hand features a series of chords and eighth notes, while the left hand plays a simple bass line. The tempo is marked *Andantino tranquillo* and the dynamics are *PIANO. p*.



But yet from out the lit-tle hill

The first line of the song features a vocal melody on a treble clef staff and piano accompaniment on two staves. The lyrics are "But yet from out the lit-tle hill". The piano accompaniment includes a prominent tremolo effect on the right hand.



Ooz - es the slen-der spring-let still, And

The second line of the song continues the vocal melody and piano accompaniment. The lyrics are "Ooz - es the slen-der spring-let still, And". The piano accompaniment continues with a similar texture to the first line.

# APPENDIX

shep - herd boys re - pair To seek the wa - ter -

flag and rush, And plait their gar - lands fair ;

When thou shalt find the lit - tle hill

*mf*

With thy heart com - mune, and be still.

*colla voce.* *rit.*

Ped. \* Ped. \*

# "ON OLD ÆGINA'S ROCK"

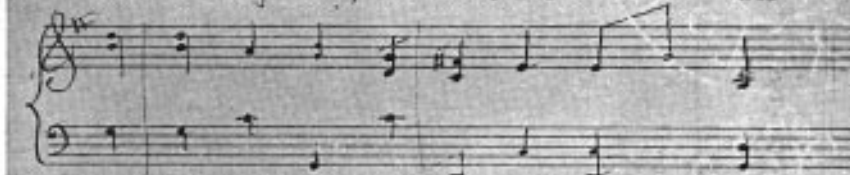
On old Æ-gi-na's rock, and Hydra's isle



The God of glad-ness sheds his parting smile.



Des- con- d'ring fast, the mountain shadows kiss



Thy glor- i- ous gulph, un-con- querd Sa- la- mis



Art yet; not yet Sol pauses on the hill



The pre- cious hour of parting. Ah . . . . . give still



## APPENDIX

I

one long line in  $\frac{1}{2}$  of a minute.  
The whole scene in half a minute.

## FAUNE, NYMPHARVM.

It goes unaltered, - 25 seconds.

Fau-ne, Nympharum fugi-ens' ai-ma-tor



Per me-os fi-nes et a-pri-ca ru-ra,



Le-nis in-ce-das, ab-e-as que par-vis



Ac-quis a-lum-nis.



# FAUNE NYMPHARUM

FAUNE. 2

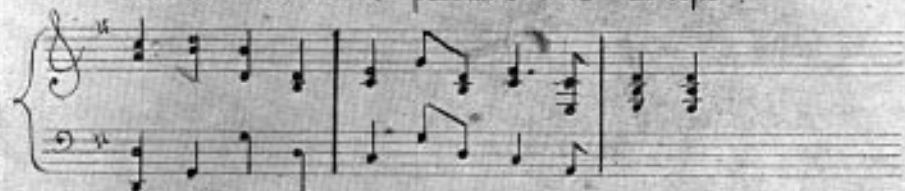
Si te-ner ple-no cae-dit hæ-dus in-no

lar-ga nec de-sunt Ve-ne-ris so-da-li

Vi-na cris-te-ræ, ve-tus ar-a mul-to

Fu-mat a-do-re

Lau-dit her-bo - so pe-cus om-ne cam-po :



Cum ti-bi No-næ re-de-unt De-cem-bres



Test-us in præ-tis va-cat o-ti - o - so



Cum bo-ve præ-gus



# FAUNE NYMPHARUM

FAUNE.

4

In-ter au-da-cos lu-pus er-rat ag-nos

Musical notation for the first system, featuring a piano accompaniment with treble and bass staves. The melody is in the treble clef, and the bass line is in the bass clef. The music is in 4/4 time and begins with a piano (p) dynamic marking.

Spargit a-gres tes ti-bi sil-va frun-des

Musical notation for the second system, featuring a piano accompaniment with treble and bass staves. The melody is in the treble clef, and the bass line is in the bass clef. The music continues in 4/4 time.

Gau-det in-vi-som pe-pu-lis-se fos-sor

Musical notation for the third system, featuring a piano accompaniment with treble and bass staves. The melody is in the treble clef, and the bass line is in the bass clef. The music continues in 4/4 time.

Ter-pe-de Ter-ram

Musical notation for the fourth system, featuring a piano accompaniment with treble and bass staves. The melody is in the treble clef, and the bass line is in the bass clef. The music concludes with a double bar line.

## APPENDIX

## "COME UNTO THESE YELLOW SANDS"

come un- to these yel- low sands, and there take hands,



Get well when you have, and kiss, The wild waves when



Foot & feet, by here and there, and let the west



the bur- den bear. Hark, hark the water-ways bank





# "TRUST THOU THY LOVE"

Trust thou thy Love, *\* she be proud,*  
*is she not sweet?*

Lay thou thy hand, *full on her hands,*  
*low at her feet*

Trust thou thy Love, *if she be mute - is she not pure!*

Fail, now and then, *yet for thy peace, she shall endure.*

The image shows a musical score for the hymn "Trust Thou Thy Love". It consists of four systems of staves, numbered 1, 3, 2, and 4. Each system has a treble and bass clef. The music is in a key with one sharp (F#) and a 4/4 time signature. Handwritten lyrics are written above the staves, and musical annotations such as triplets and slurs are present. The lyrics are: "Trust thou thy Love, \* she be proud, is she not sweet?", "Lay thou thy hand, full on her hands, low at her feet", "Trust thou thy Love, if she be mute - is she not pure!", and "Fail, now and then, yet for thy peace, she shall endure." The score is arranged for four voices or instruments.

## A NOTE OF WELCOME

What shall we say to her, now she is here,

Don't go a-way a-gain from my dear.

The image shows a musical score for the hymn "A Note of Welcome". It consists of two systems of staves, each with a treble and bass clef. The music is in a key with one sharp (F#) and a 4/4 time signature. Handwritten lyrics are written above the staves. The lyrics are: "What shall we say to her, now she is here," and "Don't go a-way a-gain from my dear." The score is arranged for two voices or instruments.